

TENOR SAX

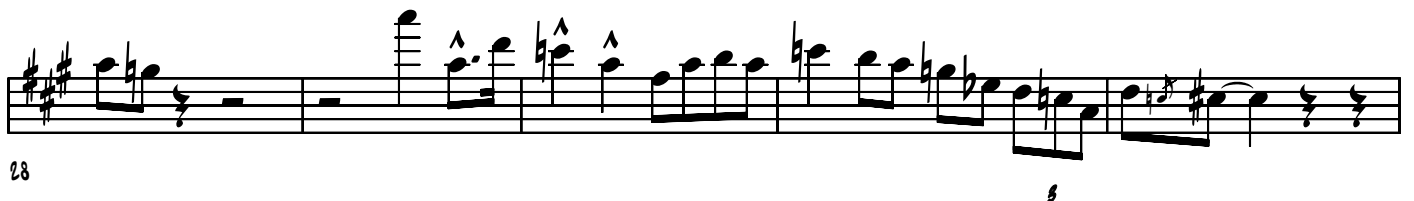
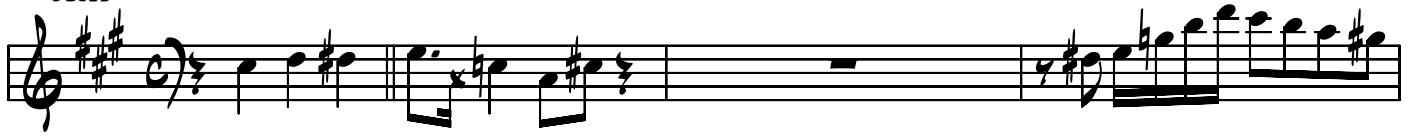
LOOK OUT

STANLEY TURRENTINE'S SOLO FROM HIS
"BLUE NOTE" RELEASE "LOOK OUT"

TRANSCRIBED BY
CHARLES McNEAL

190 BPM

BLUES



35 *s*

38 *s*

42 *s s*

46

51

56 *s*

61

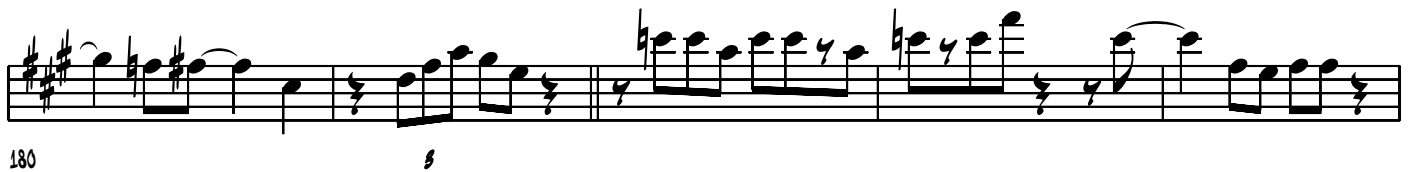
66 *s*

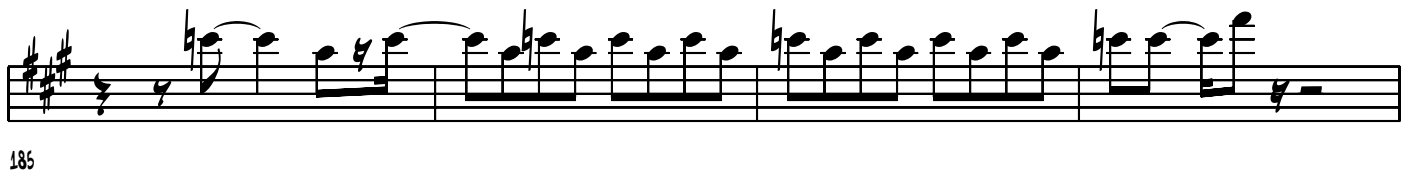
71 

75 

172 

176 

180 

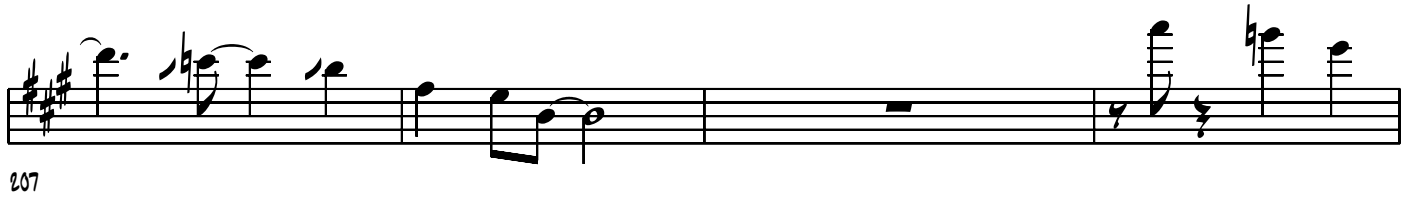
185 

189 

193 

198 

202 

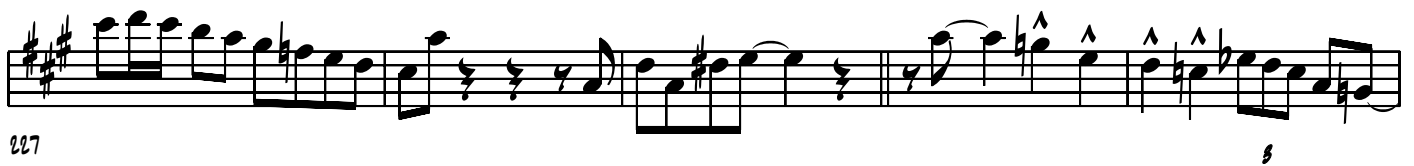
207 

211 

214 

219 

223 

227 

Musical staff 1, measures 232-236. The staff is in treble clef with a key signature of two sharps (F# and C#). It contains a melodic line with various note values, including quarter, eighth, and sixteenth notes, and rests. There are accents (^) over the notes in measures 234 and 235.

Musical staff 2, measures 237-241. The staff is in treble clef with a key signature of two sharps (F# and C#). It contains a melodic line with various note values, including quarter, eighth, and sixteenth notes, and rests. A slur covers measures 237 and 238. There are accents (^) over the notes in measures 239 and 240. The text "BACK INTO THE HEAD" is written below the staff at the end of measure 241.