

GENE AMMONS "AUTUMN LEAVES"

Handwritten musical score for Gene Ammons' "Autumn Leaves". The score is written in bass clef, 4/4 time, and includes various chords and melodic lines. The key signature is B-flat major (two flats).

Chords and Melodic Lines:

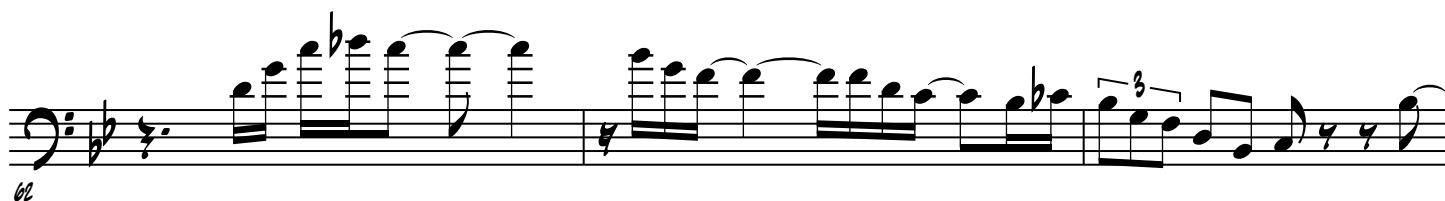
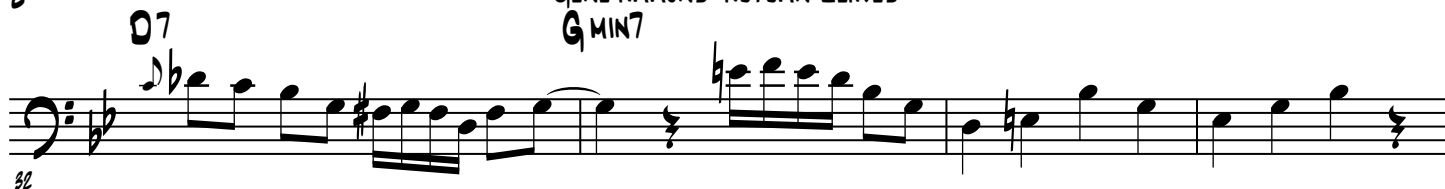
- Line 1:** C^{MIN}7, F7, B^{MIN}7, E7
- Line 2:** B^bMIN7, E^b7, A^{MIN}7, D7, G^{MIN}7
- Line 3:** C^{MIN}7, F7, B^{MIN}7, E7
- Line 4:** B^bMIN7, E^b7, A^{MIN}7, D7, G^{MIN}7
- Line 5:** A^{MIN}7, D7, G^{MIN}7
- Line 6:** C^{MIN}7, F7
- Line 7:** B^bMA7, A^{MIN}7
- Line 8:** D7, G^{MIN}7, E^{dim}, E^b7

Measure Numbers: 6, 10, 14, 18, 22, 25, 28

2

GENE AMMONS "AUTUMN LEAVES"

G MIN7



GENE AMMONS "AUTUMN LEAVES"

3

