

# Bb BLUES

TOMO FUJITA SOLO

♩=160

TRANS. BY DANA WRIGHT

**A** 8b7 Eb7 8b7 8b7

5 Eb7 8b7 G7(b9)

9 Cm7 F7 8b7 G7(b9) Cm7 F7

**B** 8b7 Eb7 8b7

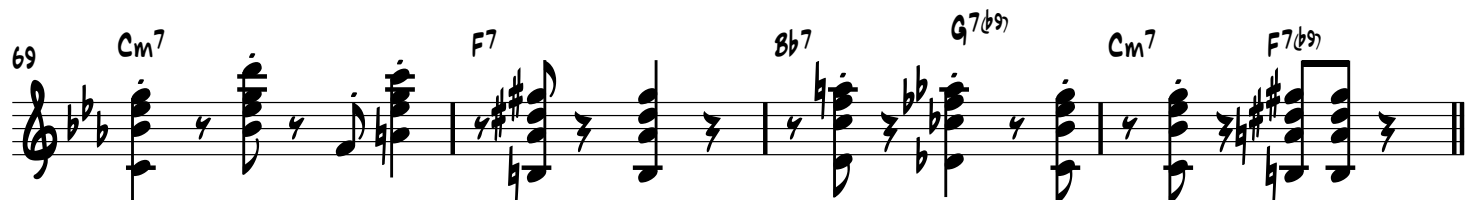
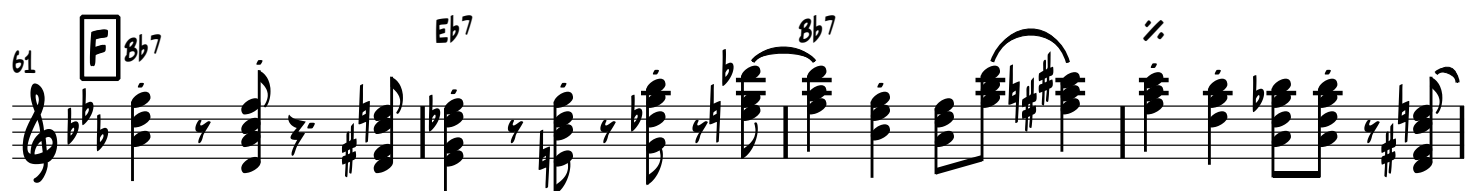
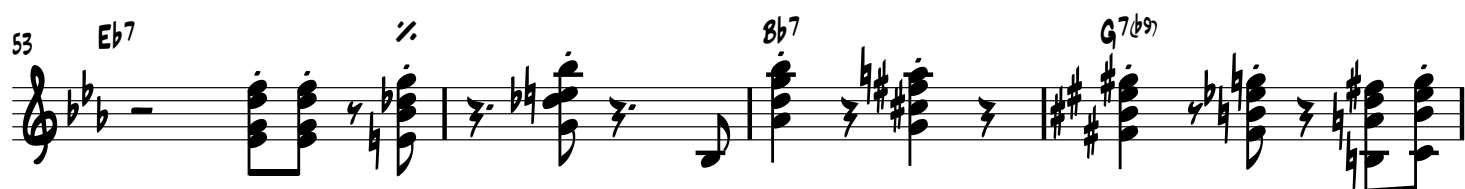
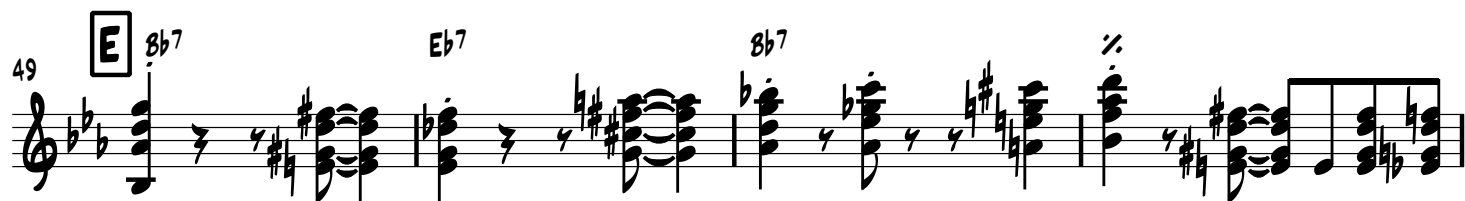
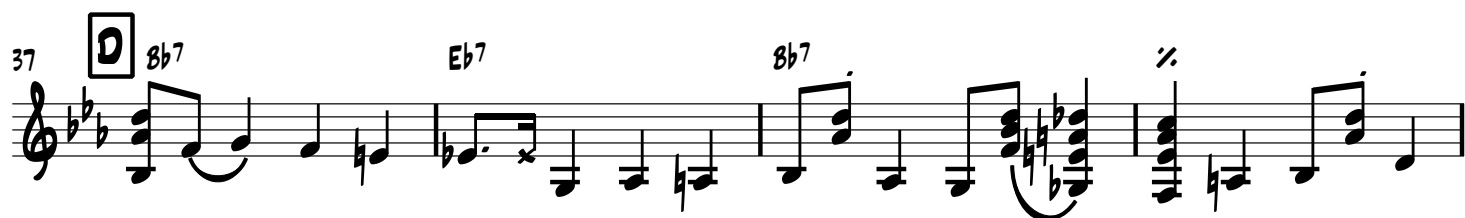
17 Eb7 8b7 G7(b9)

21 Cm7 F7 8b7 G7(b9) Cm7 F7

**C** 8b7 Eb7 8b7 Fm7 8b7

29 Eb7 8b7 G7(b9)

33 Cm7 F7 8b7 G7(b9) Cm7 F7(b9)



73 G  $Bb^7$   $Eb^7$   $Bb^7$   $G^7(b9)$

77  $Eb^7$   $Bb^7$   $G^7(b9)$

81  $Cm^7$   $F^7$   $Bb^7$   $G^7(b9)$   $Cm^7$   $F^7(b9)$

85

Detailed description: The musical score is written for guitar in E-flat major (three flats). It consists of four staves. The first staff (measures 73-76) features a sequence of chords:  $Bb^7$ ,  $Eb^7$ ,  $Bb^7$ , and  $G^7(b9)$ . The second staff (measures 77-80) continues with  $Eb^7$ ,  $Bb^7$ , and  $G^7(b9)$ . The third staff (measures 81-84) includes  $Cm^7$ ,  $F^7$ ,  $Bb^7$ ,  $G^7(b9)$ ,  $Cm^7$ , and  $F^7(b9)$ . The fourth staff (measure 85) shows a melodic line with a trill on the 4th string. The score is marked with measure numbers 73, 77, 81, and 85. A boxed 'G' is present above measure 73. A trill symbol is used in measures 74, 78, 82, and 85.