

GUITAR
STRAIGHT EIGHTHS ♩ = 108

FACING EAST

CHRIS POTTER
TRANS. NIKOLAI LIPSCOMB

[A] GUITAR AD-LIB ON RIFF

The musical score for guitar is written in treble clef with a key signature of one flat (B-flat). The tempo is marked as 'STRAIGHT EIGHTHS ♩ = 108'. The score is divided into two sections, A and B. Section A starts at measure 11 and ends at measure 24. It features a repeating eighth-note riff. Section B starts at measure 25 and ends at measure 41. It features a more complex melodic line with various intervals and accidentals. The score is written on seven staves, with measure numbers 11, 15, 21, 25, 30, 34, and 41 indicated at the beginning of their respective staves.

11

15

21

[B]

25

30

34

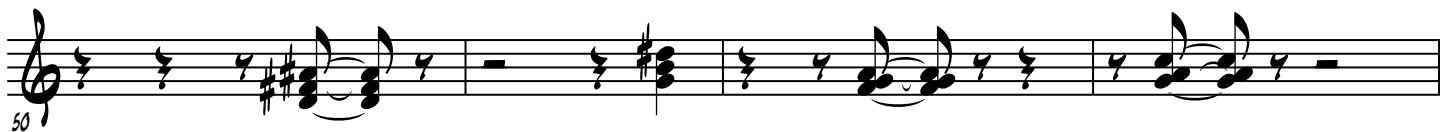
41

2

FACING EAST



SHARP GUITAR SWELLS, HIGHEST OCTAVE POSSIBLE



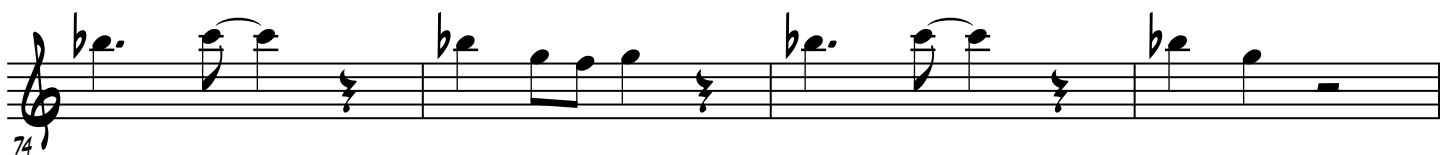
54 OPEN C-7 GUITAR SOLO



SOLO 3 MEASURES OVER HORN RIFF



BEGIN GUITAR RHYTHMIC FIGURE ON CUE



[F]

