

Petite Valse¹⁾

Baden Powell

as played on "Images on Guitar" (1972)

transcribed by Thomas Müller 2020-02-03

Part 1 **Intro** $\text{♩} = 220$

5) 2) **A1** $\text{♩} = 147$ 3) $\frac{0}{0}$ * E only in the live version (throughout)

9 live version

13

17 live version XII

21 **A1**

25

29

33 1 & 2

1) On the album falsely named "Petit Waltz", which is a mixture of French and English. I follow the print edition.

2) The meter could also be understood as 6/8. But regarding the Intro, m.5, m.37 and m.68-71, I think there is a latent 3/4 feeling throughout.

3) Baden Powell often releases the strings early before a chord change and plays them open.

37 (B1)

41

45

49 D.S. $\frac{\infty}{\infty}$ - \emptyset^1

53 \emptyset^1 Interlude 1

58

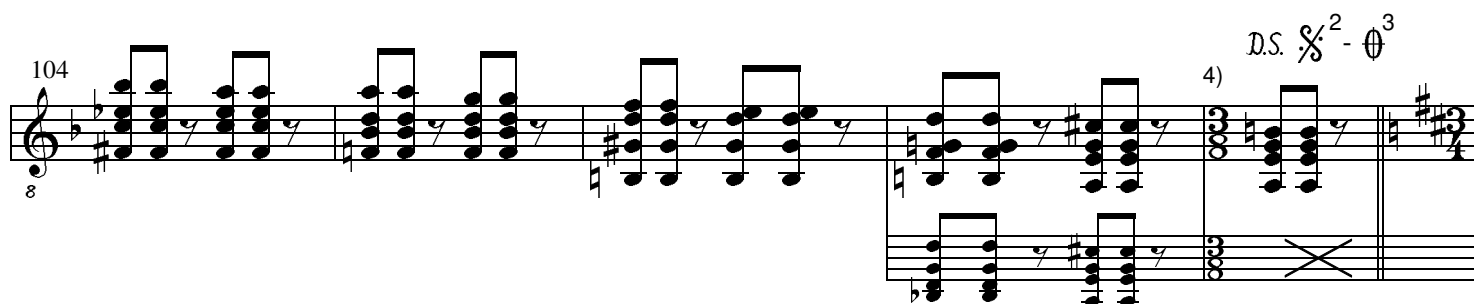
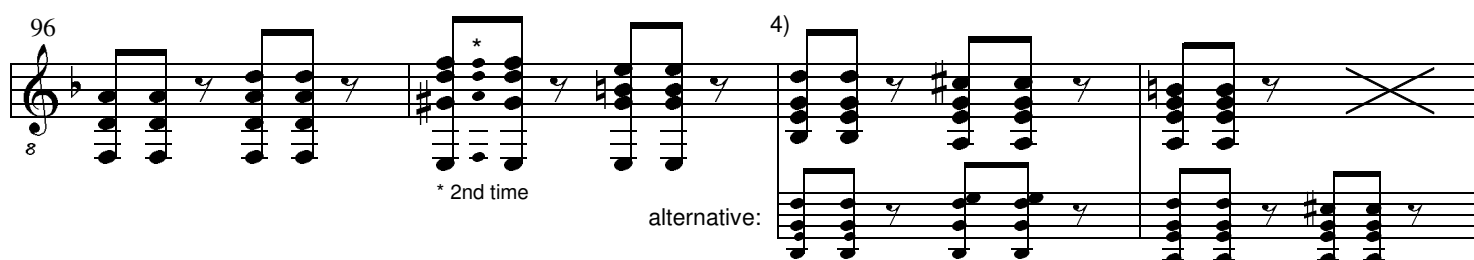
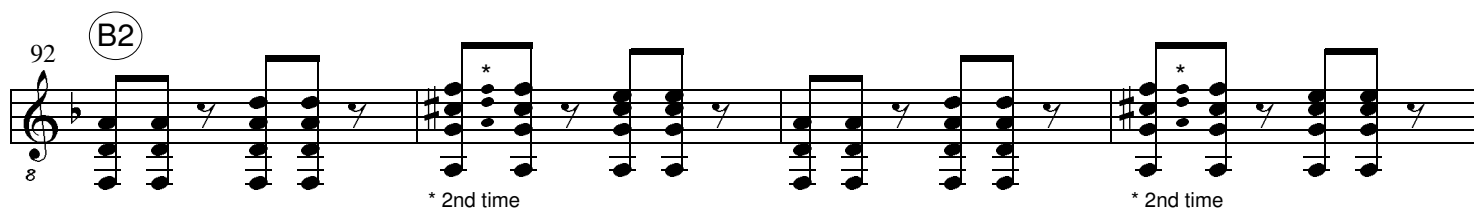
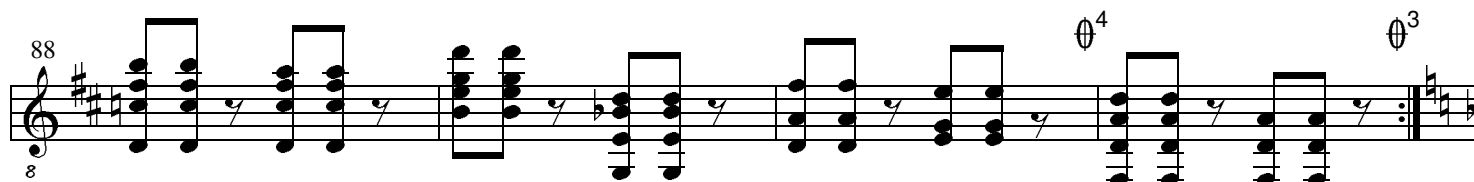
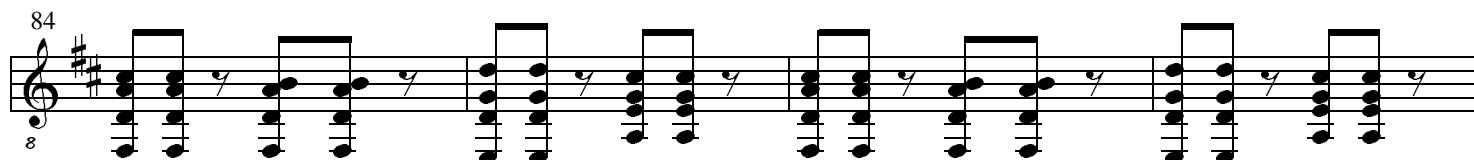
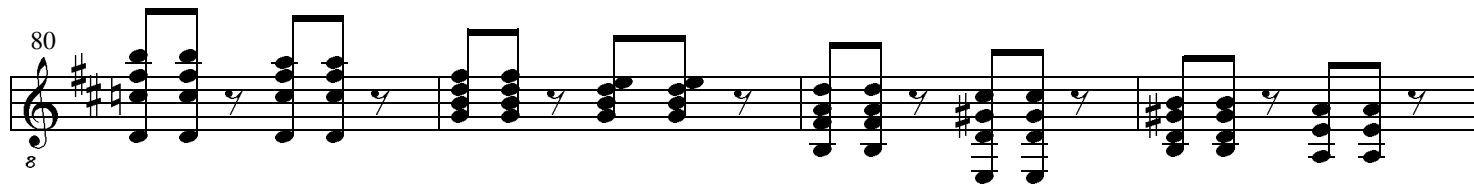
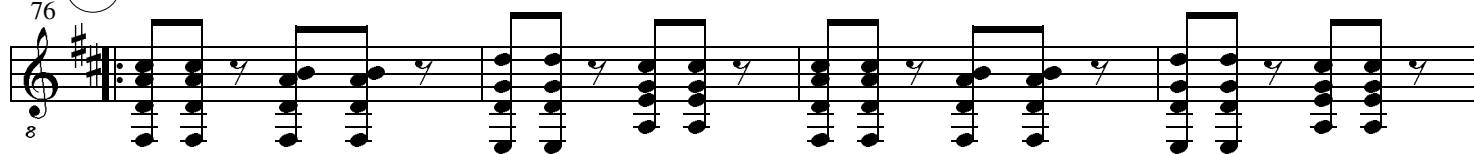
62 D.S. $\frac{\infty}{\infty}$ A1 - B1 - A1 - \emptyset^2 - Coda 1

64 \emptyset^2 Coda 1 Percussion

70

* D by mistake instead of A

♩/2 (A2) Part 2 ♩ = 178 ♩. = 119



4) In part B2 Baden Powell changes the structure in a very odd way: He shortens one phrase by half a measure (m.99) and lengthens another one by the same amount (m.108). In this aspect I agree with the editors of the print edition, who adjusted these places to B1.

109 \emptyset^3 Interlude 2

113

117 D.S. X^2 A2 - B2 - A2 - \emptyset^4 - Coda 2

119 \emptyset^4 Coda 2 percussion 3

124

Sequence:

Part 1: Intro - A1 - A1 - B1 - A1 - Interlude 1 - A1 - B1 - A1 - Coda 1

Part 2: A2 - A2 - B2 - A2 - Interlude 2 - A2 - B2 - A2 - Coda 2